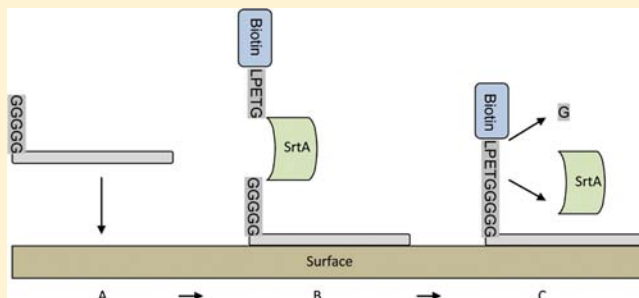


## Sortase A as a Tool to Functionalize Surfaces

Tjitske Sijbrandij, Nivedita Cukkemane, Kamran Nazmi, Enno C. I. Veerman, and Floris J. Bikker\*

Department of Oral Biochemistry, Academic Centre for Dentistry Amsterdam, University of Amsterdam and VU University Amsterdam, Gustav Mahlerlaan 3004, 1081 LA Amsterdam, The Netherlands

**ABSTRACT:** A widely accepted approach to combat surface fouling is based on the prevention of biofoulants to attach to a surface by the functionalization with poly(ethylene glycol) (PEG). The goal of this study was to generate a proof of concept for the enzymatic coupling of PEG to a peptide precoated surface by using the enzyme Sortase A (SrtA). A hydrophobic polystyrene surface was primed with anchoring peptide P3 equipped with a pentaglycine acceptor motif for SrtA, to enable subsequent transpeptidation with either biotin or a PEG-tail containing the sortase recognition motif LPETG. High levels of surface-bound biotin were detected only in cases with biotin-LPETG and SrtA. Little if any reactivity was detected in wells treated with the SrtA scrambled motif EGLTP, or in the absence of SrtA. Conjugation of PEG resulted in a significant decrease of bacterial adherence to the surface.



### INTRODUCTION

The Sortase family of transpeptidase enzymes catalyzes sequence-specific ligation of proteins to the cell wall of Gram-positive bacteria. *In vivo* Sortase A (SrtA) covalently attaches proteins to the bacterial cell wall by cleaving the LPXTG motif between the threonine (T) and the glycine (G) and then links the carboxy terminus of the cleaved protein to the terminal amino group of penta-glycine cross-bridges in the peptidoglycan.<sup>1–4</sup>

The enzyme activity of *Staphylococcus aureus* SrtA has been used *in vitro* to link various compounds displaying the C-terminal LPETG motif to compounds exposing either an N-terminal glycine motif<sup>5</sup> or 6-aminohexose moiety.<sup>6</sup> Examples include peptide nucleic acids,<sup>7</sup> oligosaccharides,<sup>6</sup> poly(ethylene glycol) (PEG),<sup>8</sup> lipids,<sup>9</sup> fluorescent labels and green fluorescent protein (GFP),<sup>10,11</sup> streptavidin, and alkaline phosphatase<sup>12,13</sup> and has also been used for peptide cyclization.<sup>14</sup>

Inspired by this straightforward methodology of enzyme coupling on one hand and the broad applicability on the other hand, we investigated whether it was possible to generate a proof of concept to enzymatically functionalize a peptide precoated surface toward an antifouling surface. Earlier, Parthasarathy and co-workers used SrtA to couple GFP to polystyrene beads which were chemically modified with either alkylamine or the *in vivo* SrtA ligand, Gly-Gly-Gly, on their surfaces.<sup>8</sup> Chan and co-workers modified various solid supports including cross-linked polymer beads, beaded agarose, and planar glass surfaces with an oligoglycine motif by standard Fmoc chemistry and using the SrtA as coupling agent.<sup>15</sup> Instead of direct modification of the surface of interest, in this study the surface was first coated with a surface binding peptide contained with a peptideptide glycine motif, (Gly)<sub>5</sub>P3. A part of this peptide, P3, was recently identified as the surface, i.e., hydroxyapatite, anchoring peptide of the salivary agglutinin

glycoprotein (SAG).<sup>16</sup> Polystyrene, which has a hydrophobic character, was chosen as model surface. After peptide coating, a hydrophilic, bacteria-repellent moiety of PEG equipped with a C-terminal LPETG motif was enzymatically coupled to the surface-bound peptide using SrtA. To analyze the potential altered bioadhesion characteristics, the effect on adhesion of *Yersinia pseudotuberculosis*, which readily adsorbs onto this type of surfaces, was studied.<sup>17,18</sup>

### EXPERIMENTAL PROCEDURES

**Bacteria.** *Y. pseudotuberculosis* (DSM 8992) was cultured on Tryptic Soy Agar (TSA) plates under anaerobic conditions maintained in tryptic soy broth (TSB) under aerobic conditions at 30 °C. For binding studies cells were harvested by centrifugation for 10 min at 10 000×g and washed twice in TRIS-buffered saline (TBS, 50 mM TRIS, pH 7.5, containing 150 mM NaCl) supplemented with 1 mM CaCl<sub>2</sub>. Bacteria were diluted in buffer to a final OD<sub>600</sub> of 0.5, corresponding with approximately 10<sup>8</sup> cells/mL.

**Solid-Phase Peptide Synthesis.** The peptides and peptide conjugates, including the biotinylated peptides, as well as the PEG-conjugated peptide, were synthesized by solid-phase peptide synthesis using Fmoc chemistry with a MilliGen 9050 peptide synthesizer (Milligen-Bioscience, Bedford, MA, USA). Biotin (Biotin *p*-nitrophenyl ester, 5-(2-Oxo-hexahydro-thieno-[3,4-d]imidazol-6-yl)-pentanoic acid *p*-nitrophenyl ester) (Novabiochem, Darmstadt, Germany) was used as conjugate.  $\alpha,\omega$ -Bis-carboxy poly(ethylene glycol) (PEG) MW 20 000 Da (Iris Biotech GmbH, Marktredwitz, Germany) was used as conjugate. All peptides and peptide-conjugates used in this

Received: January 8, 2013

Revised: March 19, 2013

Published: March 26, 2013

study are summarized in Table 1. Peptides and conjugates were purified by semi preparative RP-HPLC (Jasco Corp., Tokyo,

**Table 1. Peptides Used<sup>a</sup>**

peptide	sequence
(Gly) <sub>5</sub> P3	HOOC-GGGGGDDSWDTNDANVVCRLGA-NH <sub>2</sub>
Biotin-LPETG	Biotin-LPETG-NH <sub>2</sub>
Biotin-EGLTP	Biotin-EGLTP-NH <sub>2</sub>
PEG-LPETG	PEG-LPETG-NH <sub>2</sub>

<sup>a</sup>Sortase recognition motifs are indicated in bold. PEG: Poly(ethylene glycol) (MW 20 000 Da).

Japan) on a Vydac C18-column (218MS510; Vydac, Hesperia, CA, USA). Peptides were dissolved in H<sub>2</sub>O containing 5% acetonitrile (AcN; Biosolve) and 0.1% TFA. Elution was performed with a linear gradient from 15% to 45% AcN containing 0.1% TFA in 20 min at a flow rate of 4 mL/min. The absorbance of the column effluent was monitored at 214 nm, and peak fractions were pooled and lyophilized. Reanalysis by RP-HPLC on an analytic Vydac C18-column (218MS54) developed with a similar gradient at a flow rate of 1 mL/min revealed a purity of ≥95%. The authenticity was routinely confirmed by mass spectrometry (MS). Mass spectra were recorded with a Thermo LTQ ion-trap mass spectrometer in nanospray configuration (Thermo Fisher Scientific, Hampton, NH, USA) or a Microflex LRF matrix-assisted laser desorption/ionization time-of-flight (MALDI-TOF) mass spectrometer equipped with an additional gridless reflectron (Bruker Daltonik, Bremen, Germany). The purity of the peptides and conjugates was at least 90%.

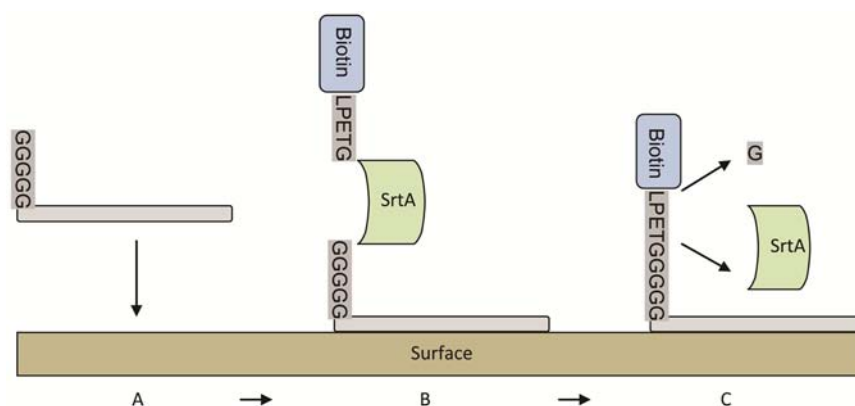
**Expression and Purification of SrtA.** A soluble version of SrtA was created as reported earlier comprising the catalytic domain of the *S. aureus* SrtA (aa 26 to 206) and a hexa-histidine tag at the N terminus (cloned in to pQE30; Qiagen, Valencia, CA, USA).<sup>14</sup> Briefly, the SrtA-expression plasmid containing *Escherichia coli* BL-21 (DE3) was cultured in the presence of 10 µg/mL ampicillin until OD<sub>600</sub>–0.7. SrtA production was induced by the addition of 1 mM isopropyl β-D-thiogalactopyranoside (IPTG). After an additional 3 h of culturing, bacteria were harvested by centrifugation at 3500×g at 4 °C for 30 min and resuspended in ice-cold lysis buffer (50 mM TRIS-HCl, pH 7.5, containing 150 mM NaCl, 20 mM imidazole, and 10% glycerol). Bacteria were lysed by passing through a prechilled

cell disruption press (One Shot Model; Constant Systems Ltd., Daventry Northants, UK) operating at 1250 kpsi (8618 MPa). The lysate was cleared by centrifugation at 14 000×g at 4 °C for 30 min. The supernatants were subjected to affinity chromatography on a recharged Ni<sup>2+</sup>-HisTrap HP column (GE Healthcare, Uppsala, Sweden). The column was washed extensively with lysis buffer containing 50 mM imidazole and eluted with lysis buffer containing 500 mM imidazole. The imidazole was removed by a buffer exchange step on a PD-10 desalting column (GE Healthcare). Purity was analyzed by SDS-PAGE; if necessary, affinity purification was repeated. The affinity-purified SrtA was stored in 10% glycerol, 50 mM TRIS-HCl (pH 8.0), and 150 mM NaCl at –80 °C until further use. Alternatively, SrtA was purified directly from the HisTrap elution fractions, without buffer changes or imidazole removal, by semipreparative RP-HPLC, using a linear gradient from 25% to 45% AcN containing 0.1% TFA in 20 min at a flow rate of 4 mL/min. HPLC-purified SrtA was lyophilized and stored at –20 °C. The latter method produced SrtA of >95% purity.

**Determination of SrtA Activity.** SrtA activity was monitored using a FRET bacterial sortase substrate I, being LPETG equipped with the fluorophore EDANS at the C terminus and the quencher DABCYL at the N terminus (AnaSpec, Fremont, CA, USA), according to manufacturer's procedure.<sup>14</sup> Fluorescence was monitored with a Fluostar Galaxy microplate fluorimeter (BMFG Labtechnologies, Offenbourg, Germany).

**Surface Sortase Mediated Conjugation of Peptide (Gly)<sub>5</sub>P3.** Microtiterplates Fluotrac 600 (Greiner, Recklinghausen, Germany) were coated with 50 µM peptide (Gly)<sub>5</sub>P3, which was recently identified as a surface binding peptide with affinity for hydroxyapatite<sup>16</sup> in 200 µL coating buffer (100 mM sodium carbonate, pH 9.6). After incubation at 4 °C for 16 h, plates were washed twice with 300 µL TBST to prevent nonspecific binding and washed twice with sortase reaction buffer (50 mM TRIS, pH 7.5, containing 150 mM NaCl and 5 mM CaCl<sub>2</sub>). Then, the conjugates biotin-LPETG and biotin-EGLTP and PEG-LPETG dissolved in sortase reaction buffer were added. For conjugation, 1/5 (w/w) SrtA was added and incubated at 37 °C for 16 h.

**Detection of SrtA Conjugated Biotinylated Peptides.** Microplates with conjugated biotinylated peptides were washed three times with TBST. Then, 1:10.000 diluted HRP-Conjugated Streptavidin (Sanquin, Amsterdam, The Nether-



**Figure 1.** Schematic representation of surface functionalization of a peptide coating by SrtA. (A) At first peptide (Gly)<sub>5</sub>P3 adheres to the surface. (B) Second, the peptide containing a N-terminal LPETG motif and SrtA are added to facilitate conjugation. (C) Upon conjugation, the N-terminal glycine is removed and both peptides are covalently coupled.

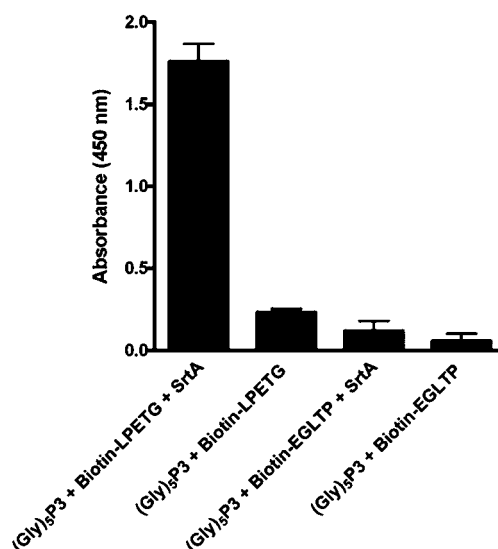
lands) was added and incubated for 1 h at RT. After three washes with TBST, peroxidase activity was detected after incubation with a solution containing 3,3',5,5'-tetramethylbenzidine (10 mg/mL) and 0.5  $\mu$ L of hydrogen peroxide (30%) in 0.1 M NaOAc and 0.1 M citric acid at pH 4. The color reaction was stopped by adding 25  $\mu$ L of 4 M  $H_2SO_4$ , and the absorbance was read at 450 nm with a microplate reader. The assay was performed twice in triplicate.

**Antifouling Assessment of the SrtA Conjugated PEG-LPETG Coating.** Antifouling activity of the SrtA functionalized coating was examined essentially as described earlier using a microtiter plate method based on labeling of microorganisms with cell-permeable DNA-binding probes.<sup>16,19</sup> For this, 200  $\mu$ L of  $\sim 10^8$  cells/mL *Y. pseudotuberculosis* supplemented with 1  $\mu$ M SYTO-13 solution (Molecular Probes, Leiden, The Netherlands), a cell-permeable fluorescent DNA-binding probe, was added to each well and incubated for 3 h at 37 °C at 150 rpm. In order to prevent evaporation, the microplate was sealed. Subsequently plates were washed twice with TBS supplemented 1 mM  $CaCl_2$  using a plate washer (Mikrotek EL 403, Winooski, VT). Bound bacteria were detected using by measuring fluorescence in a fluorescence microtiter plate reader (Fluostar Galaxy, BMG Laboratories, Offenburg, Germany) at 488 nm excitation and 509 nm emission wavelength. These experiments were performed in duplicate and were repeated at least three times.

## RESULTS

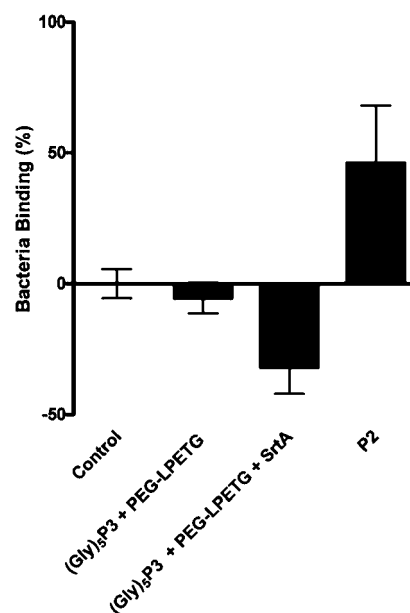
**Precoated Surface Conjugation by Sortase.** Peptide (Gly)<sub>5</sub>P3 was coated on a microplate, as represented by Figure 1A. Then, after washing, the biotinylated peptides were added, possessing either the normal sortase motif (LPETG) or the scrambled sortase motif (EGLTP), which was used as control substrate. At the same time SrtA was added to enable the formation of a covalent amide bond between the  $\alpha$ -carboxyl group of the N-terminal glycine of peptide (Gly)<sub>5</sub>P3 (HOOC-GGGGGDSDWTNDANVVCRLGA-NH<sub>2</sub>) and the  $\alpha$ -amino group of the C-terminus of threonine of peptide Biotin-LPETG (Biotin-LPETG-NH<sub>2</sub>), removing the N-terminal glycine (Figure 1B). After washing, to remove the uncoupled peptides, the presence of coupled biotin was detected using streptavidin-HRP (Figure 1C). High levels of surface-bound biotin were only found in the wells that were treated with biotin-LPETG and SrtA (Figure 2). Little if any reactivity was detected in wells treated with the scrambled motif, or in the absence of SrtA. These data clearly indicate that SrtA conjugation using the normal SrtA sequence was successful.

**Antifouling Analysis of SrtA Mediated Pegylated Surface.** To examine if changing the surface characteristics is feasible using this strategy, we aimed to pegylate the surface, using SrtA in combination with a PEG-LPETG conjugate. Again, (Gly)<sub>5</sub>P3 was coated on a microplate. Then, after washing, PEG-LPETG was added in the presence of SrtA to enable the formation of a covalent amide bond between the N-terminal glycine of peptide (Gly)<sub>5</sub>P3 and the  $\alpha$ -amino group of the C-terminus of threonine of PEG-LPETG (PEG-LPETG-NH<sub>2</sub>), removing the N-terminal glycine. After removal of the nonbound material, the bacteria repellent characteristics of the surface to *Y. pseudotuberculosis* in a solid-phase adherence assay were evaluated. Peptide P2, which was previously identified as representative of the bacterial binding moiety of SAG, was included as positive control.<sup>16,19</sup> Bacteria adhered to the surface



**Figure 2.** Enzymatic conjugation of surface binding peptide (Gly)<sub>5</sub>P3 to biotinylated-sortase peptides: Biotin-LPETG (normal) and Biotin-EGLTP (scrambled) in the presence and absence of SortaseA. The presence of biotin was detected using a HRP–streptavidin conjugate. The error bars represent the standard error.

of an uncoated microplate. Binding was enhanced by  $\sim 45\%$  by a coating of 50  $\mu$ M P2 (Figure 3). In contrast, it was found that



**Figure 3.** Antifouling activity of PEG-LPETG conjugated to surface coated (Gly)<sub>5</sub>P3 by Sortase. P2 was used as positive control.<sup>19</sup> The error bars represent the standard error.

the presence of the (Gly)<sub>5</sub>P3-PEG conjugate resulted in a decreased binding of bacterial cells to the surface of approximately 30% compared to the uncoated surface (Figure 3). In the absence of SrtA, no significant antifouling activity was found.

## DISCUSSION

The goal of this study was to generate a proof of concept for the enzymatic coupling of an antifouling moiety to a peptide



precoated surface by using SrtA. A widely accepted approach to combat surface fouling is based on the prevention of biofouling such as bacteria to attach to a surface by the functionalization with PEG. So far, physical adsorption, chemical adsorption, direct covalent attachment, and block or graft copolymerization are some of the techniques that have been used to attach PEG to surfaces covalently.<sup>20–22</sup> Alternatively, noncovalently bound biomimetic antifouling polymers have also been developed. For example, Dalsin and co-workers used 3,4-dihydroxyphenylalanine as surface anchoring moiety to tether PEG to titanium dioxide.<sup>23</sup>

Polystyrene surfaces have a hydrophobic character and bind cells and biomolecules through hydrophobic interactions. Because of its hydrophilic character, PEG has no affinity for hydrophobic surfaces. So, the surface was primed with a peptide equipped with the pentaglycine acceptor motif of sortase, to enable subsequent transpeptidation with a PEG-tail containing the sortase recognition motif LPETG. The polystyrene plates which were used in this study are high binding polystyrene surfaces showing affinity for bacteria, including *Y. pseudotuberculosis*.<sup>17,18</sup> By SrtA mediated conjugation of anchoring peptide (Gly)<sub>5</sub>P3, i.e., a variant of surface binding peptide P3,<sup>18</sup> to PEG-LPETG it was hypothesized that *Y. pseudotuberculosis* binding to the polystyrene would be influenced since PEG has, in contrast to polystyrene, an hydrophilic character. Indeed, it was found that the SrtA mediated conjugation of PEG resulted in a significant decrease of bacterial adherence (Figure 3). These data strongly suggest that PEG was successfully conjugated to the precoated (Gly)<sub>5</sub>P3 peptide.

In summary, so far SrtA has been used widely for linkage and functionalization of various biomolecules compounds,<sup>5,6,8,9,12,14</sup> although to our knowledge we are the first who have used SrtA to generate an antifouling conjugate *in vitro*, under mild conditions. This strategy offers promise for directed functionalization of biomedical materials which are not amenable for direct covalent linkage.

## AUTHOR INFORMATION

### Corresponding Author

\*E-mail: fbikker@acta.nl

### Notes

The authors declare no competing financial interest.

## ACKNOWLEDGMENTS

Financial support from Stichting Toegepaste Wetenschappen (STW) grant 10184, and the Dutch Ministry of Defense, the V1036 program, are gratefully acknowledged.

## REFERENCES

- (1) Bierre, H.; Mazmanian, S. K.; Trost, M.; Pucciarelli, M. G.; Liu, G.; Dehoux, P.; Jansch, L.; Garcia-del Portillo, F.; Schneewind, O.; and Cossart, P. (2002) Inactivation of the *srtA* gene in *Listeria monocytogenes* inhibits anchoring of surface proteins and affects virulence. *Mol. Microbiol.* 43, 869–881.
- (2) Mazmanian, S. K.; Liu, G.; Hung, T. T.; and Schneewind, O. (1999) *Staphylococcus aureus* sortase, an enzyme that anchors surface proteins to the cell wall. *Science* 285, 760–763.
- (3) Schneewind, O.; Model, P.; and Fischetti, V. A. (1992) Sorting of protein-A to the *Staphylococcal* cell-wall. *Cell* 70, 267–281.
- (4) Ton-That, H.; Liu, G.; Mazmanian, S. K.; Faull, K. F.; and Schneewind, O. (1999) Purification and characterization of sortase, the transpeptidase that cleaves surface proteins of *Staphylococcus aureus* at the LPXTG motif. *Proc. Natl. Acad. Sci. U.S.A.* 96, 12424–12429.

- (5) Levary, D. A.; Parthasarathy, R.; Boder, E. T.; and Ackerman, M. E. (2011) Protein-protein fusion catalyzed by Sortase A. *PLoS One* 6, e18342.
- (6) Samantaray, S.; Marathe, U.; Dasgupta, S.; Nandicoori, V. K.; and Roy, R. P. (2008) Peptide-sugar ligation catalyzed by transpeptidase sortase: a facile approach to neoglycoconjugate synthesis. *J. Am. Chem. Soc.* 130, 2132–2133.
- (7) Pritz, S.; Wolf, Y.; Kraetke, O.; Klose, J.; Bienert, M.; and Beyermann, M. (2007) Synthesis of biologically active peptide nucleic acid-peptide conjugates by sortase-mediated ligation. *J. Org. Chem.* 72, 3909–3912.
- (8) Parthasarathy, R.; Subramanian, S.; and Boder, E. T. (2007) Sortase A as a novel molecular “stapler” for sequence-specific protein conjugation. *Bioconjugate Chem.* 18, 469–476.
- (9) Wu, S.; and Proft, T. (2010) The use of sortase-mediated ligation for the immobilisation of bacterial adhesins onto fluorescence-labelled microspheres: a novel approach to analyse bacterial adhesion to host cells. *Biotechnol. Lett.* 32, 1713–1718.
- (10) Popp, M. W.; Dougan, S. K.; Chuang, T. Y.; Spooner, E.; and Ploegh, H. L. (2011) Sortase-catalyzed transformations that improve the properties of cytokines. *Proc. Natl. Acad. Sci. U.S.A.* 108, 3169–3174.
- (11) Tanaka, T.; Yamamoto, T.; Tsukiji, S.; and Nagamune, T. (2008) Site-specific protein modification on living cells catalyzed by Sortase. *ChemBioChem* 9, 802–807.
- (12) Matsumoto, T.; Sawamoto, S.; Sakamoto, T.; Tanaka, T.; and Kondo, A. (2009) Site-specific streptavidin modification using sortase. *J. Biosci. Bioeng.* 108, S108.
- (13) Sakamoto, T.; Sawamoto, S.; Tanaka, T.; Fukuda, H.; and Kondo, A. (2010) Enzyme-mediated site-specific antibody-protein modification using a ZZ domain as a linker. *Bioconjugate Chem.* 21, 2227–2233.
- (14) Bolscher, J. G.; Oudhoff, M. J.; Nazmi, K.; Antos, J. M.; Guimaraes, C. P.; Spooner, E.; Haney, E. F.; Vallejo, J. J.; Vogel, H. J.; van 't Hof, W.; Ploegh, H. L.; and Veerman, E. C. (2011) Sortase A as a tool for high-yield histatin cyclization. *FASEB J.* 25, 2650–2658.
- (15) Chan, L. Y.; Cross, H. F.; She, J. K.; Cavalli, G.; Martins, H. F. P.; and Neylon, C. (2007) Covalent attachment of proteins to solid supports and surfaces via sortase-mediated ligation. *PLoS One* 2, e1164.
- (16) Bikker, F. J.; Cukkemane, N.; Nazmi, K.; and Veerman, E. C. (2013) Identification of the hydroxyapatite binding domain of salivary agglutinin. *Eur. J. Oral Sci.* 121, 7–12.
- (17) El Tahir, Y.; and Skurnik, M. (2001) YadA the multifaceted *Yersinia* adhesin. *Int. J. Med. Microbiol.* 291, 209–218.
- (18) Paerregaard, A.; Espersen, F.; and Skurnik, M. (1991) Role of the *Yersinia* outer-membrane protein YadA in adhesion to rabbit intestinal tissue and rabbit intestinal brush-border membrane-vesicles. *Apmis* 9, 226–232.
- (19) Bikker, F. J.; Ligtenberg, A. J.; Nazmi, K.; Veerman, E. C.; van 't Hof, W.; Bolscher, J. G.; Poustka, A.; Nieuw Amerongen, A. V.; and Mollenhauer, J. (2002) Identification of the bacteria-binding peptide domain on salivary agglutinin (gp-340/DMBT1), a member of the scavenger receptor cysteine-rich superfamily. *J. Biol. Chem.* 277, 32109–32115.
- (20) Banerjee, I.; Pangule, R. C.; and Kane, R. S. (2011) Antifouling coatings: recent developments in the design of surfaces that prevent fouling by proteins, bacteria, and marine organisms. *Adv. Mater.* 23, 690–718.
- (21) Gabriel, M.; Nazmi, K.; Veerman, E. C.; Nieuw Amerongen, A. V.; and Zentner, A. (2006) Preparation of LL-37-grafted titanium surfaces with bactericidal activity. *Bioconjugate Chem.* 17, 548–550.
- (22) Llanos, G. R.; and Sefton, M. V. (1993) Immobilization of poly(ethylene glycol) onto a poly(vinyl alcohol) hydrogel: 2. Evaluation of thrombogenicity. *J. Biomed. Mater. Res.* 27, 1383–1391.
- (23) Dalsin, J. L.; Hu, B. H.; Lee, B. P.; and Messersmith, P. B. (2003) Mussel adhesive protein mimetic polymers for the preparation of nonfouling surfaces. *J. Am. Chem. Soc.* 125, 4253–4258.